

From Our Chairman

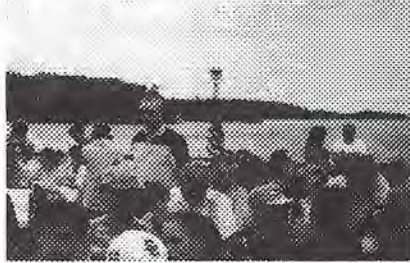
Jerry Linnell, Chair

Dear Cousins:

Wow, what a reunion. Pine Tree Resort on the St. Lawrence River was the perfect venue at which to celebrate Samuel Linnell's life and the Linnell Family Association 2000 reunion. Although it was not possible to get to Grindstone Island where Samuel and his family once lived, the stories of his life as told by Bob Cummings and Dick Linnell at the Saturday evening banquet piqued your interest in him and his family and their life at such a historical time in our country. The boat ride that so many of us enjoyed on Saturday afternoon gave testament to the ruggedness of the area and what a difficult time it must have been for many of the other descendants of Robert Linnell who made their way slowly westward. I am sure their struggles to reach new territories will be food for thought as we look forward to 2003 and our travel to Black River Falls, Wisconsin, to celebrate yet another wonderful weekend with so many unknown Linnell families.

There are many people to thank for making our 2000 reunion weekend so special. Two

(From the Chair—Continued on page 3)



Our Chairman, Jerry Linnell, heads above the rest & enjoying the view during Saturday's boat ride.

Aloha to all the Linnell Family

Kay & Jim Swedberg

Of all of the Hawaiian words, Aloha is probably the best known. Tourists are bombarded with it as they arrive and at every activity planned for them. And perhaps rightly so. It is a good word with many meanings. It means hello and good-bye, it means love and caring and friendship and so much more. We think it is just the right word to express our feelings as we pass the newsletter editing job over to Pam Ponting.

We have enjoyed editing the newsletter these past few years. It is interesting and fun work, trying to arrange the articles and pictures to fit together in a coherent fashion. Of course it can be frustrating, too. Either there isn't enough material to fill the pages and you must desperately try to add something to fill the space. Or there is too much material and you have to decide which of the equally interesting things has to be left out. And, of course, there is one big plus: we get to see all the news first! I am sure Pam will find the job as interesting and as challenging as we did and we look forward to seeing the improvements she will make.

Jerry Linnell's expression of aloha in giving us the Linnell Bowl was unexpected and overwhelming. We were totally speechless. Of course,

(Aloha—Continued on page 5)

Reunion 2000 Edition ~ What's Inside



Reunion Review.....	2	LFA Website.....	5
Reunion Happenings.....	2	Reunion Proceedings.....	6
Updating Family Records.....	3	LFA Necrology.....	7
Reunion Attendees.....	4	Steering Committee	
Scrapbook Project.....	5	& LFA Contacts.....	7
From the Editor.....	5		

Reunion Review

Rachel Linnell Wynn, Historian

It is now a month after the Reunion 2000. These are some of the memories that remain to affirm the fact that we do have a Linnell Family Association of cousins who gathered to enjoy each other, to understand a bit more of our history and to plan to build on that past.

While we missed several cousins who have usually been with us, a third of those who came had never been with us before. Their enjoyment affirmed us and our future. Indeed the spirit of the group through the two days was a pleasure to be there. Part the sheer beauty of the Pine Tree Resort situated on the St. Lawrence River and our most pleasant accommodations. Our Galley Room location for most of our activities gave a sense of ownership for who we are. There we looked at memorabilia, worked on the computer under the direction of Glen Roberts, bought t-shirts and books and just enjoyed visiting. But, especially Jerry and Pat's friendly welcome and leadership of Friday evening activities carried us through the whole weekend. Of course, the welcome registration from Judy Spelde and Bob Linnell gave all a sense of being part of the group and anticipating all that was to come.

The wonderful quilt created over the past eight years through the efforts of Pam Ponting and Barrie Westerwick and a group of cousin quilters set the tone of history and affirmation of who we are. The buildup of excitement in the silent auction carried to the final bell on Saturday night when the \$500.00 bid carried the quilt to Cheryl Kinney. That the proceeds of the quilt now becomes the award for the first scholarship to one of our own young people winning the contest carries the future of our group forward.

The Association affirmed our future with a



Barrie, Cheryl, Pam together following the Saturday banquet. Cheryl was thrilled to acquire this family heirloom

Scholarship Fund and we affirmed our past history by voting to replace the cemetery stone of Jonathan Linnell, the oldest known cemetery stone of our family, in the Orleans, Massachusetts cemetery.

Concern over the lack of membership dues was met with a desire of the group to affirm the positive directions that Jerry and the Steering Committee have moved in the two issues noted above. This gave a real feeling of family appreciation for our past and future.

On Saturday night, Bob Cummings and Dick Linnell noted the part Linnells had played in this Grindstone Island, New York location. Since Bob was born on Grindstone Island, he gave an especially memorable account of the area. Dick filled in on other history pictured on the parchment placemats at the dinner tables. Tables were decked in blue spruce nursery trees in pots to carry back home from this north country. Many other touches of hospitality were provided by Kate Metcalf, Joan Newman, Barbara Ulrichs, Kristen Moore, and Mark and Barb Wynn. As always, it was the manner of the participants who made it the happy occasion that it was.

Other Reunion Happenings



Saturday evening's banquet was a festive family gathering. The tables were decorated with tree seedlings in tiny pots prepared and decorated by Martha & Emily Borland.

Family members were recognized for their past and continuing work supporting the Association. Jerry Linnell presented Judy Spelde with a gift in appreciation for 9 years service as LFA Treasurer. Maryan Ainsworth was recognized for her fine efforts as Reunion Chair. Rachel Wynn's continued dedication was honored and recognized with the presentation of a Sackett's Harbor pitcher by Dick Linnell.

Bob Cummings spoke on the history of Grindstone Island. We learned that perhaps the grave of Samuel Linnell may be located there but no positive confirmation yet.

(Reunion Happenings—Continued on page 6)

(From the Chair—Continued from page 1)

women of whom I am so proud did a masterful job of helping the steering committee plan our stay in Alexandria Bay. Rachel Wynn was a fountain of information as she pulled together a list of sites of interest, secured "volunteer" help for some of the festivities, assisted in individual genealogy, and assembled, along with Dick Linnell and Althea Tremewan, a list of new people to fill the vacancies in the next three-year term of the steering committee; Maryan Ainsworth joined us on Saturday, after attending to her son's Friday graduation. She spent many hours negotiating with the resort's management to assure us a most delightful menu and comfortable accommodations at an affordable price. She was remarkable in her liaison efforts.

Judy Spelde and Bob Linnell handled registration flawlessly. Judy will be missed as her Treasurer duties pass to Scott Linnell, one of three new steering committee members. Bob Linnell will switch from vice chair to secretary while still keeping his cemetery restoration duties. Bob was instrumental in the Association's approval of up to \$2,000 to restore the oldest Linnell gravestone, that of Jonathan Linnell on Cape Cod.

Dick Linnell helped in so many ways – pins, shirts, placemats, nominating committee, and the Saturday night program, to name a few. Glen Roberts did yeoman work, lugging his computer equipment from MN and setting it up at the resort so all of us might have an opportunity to get in a little genealogical exploring.

The Swedbergs, Jim & Kay – all the way from Hawaii – have stepped down as newsletter editors and Pam Ponting from California will take on the job. Pam has some mighty big shoes to fill in her future tasks, as Jim & Kay have done such artful and accurate editorial management of our quarterly newsletter. We owe them a debt of gratitude for their work.

As anyone in attendance in NY could tell you, the Linnell quilt was a huge success. Thanks to the provocative work of Barrie Westerwick and Pam Ponting, the association held a silent auction during the weekend. The high bidder was Cheryl Kinney of Woodbury, MN. What a treasure she will enjoy for years to come. Pam and Barrie, thank you so much for putting together, along with your quilters – Rachel Wynn, Judy Spelde,

Mildred Linnell, Maureen Linnell, Virginia Hayes, Linda Baum, Carole Fritz and Donna Lister – this Linnell family artifact. The proceeds from the quilt auction will be used as an initial sum to award the first ever LFA scholarship sometime, hopefully, in 2001. There will be a lot more information to follow on this subject.

Also, there are two young cousins who deserve a special thank you for their help with table decorations, gift selection, Sunday services, and ticket collection. Hopefully, Emily and Martha Borland will be joined by some young male counterparts at conventions in years to come so as to keep our association young and alive.

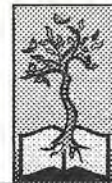
Another highlight of the reunion weekend was "the bus," all the way from Minnesota. Bob Whitney put together a special trip for 16 of our adventuresome cousins. It was another of the several jewels we enjoyed during our stay at Pine Tree. To Bob and his hardy travelers, I can most proudly say you added immensely to our time together. Surely there will be a personal account or two of the bus trip in some of the upcoming newsletters.

I cannot end without saluting two of our most talented cousins; Marvel Soderlund, for her wonderful keyboard playing during some of our entertaining musical moments, and our resident pastor these many years. J.C. Wynn is such a delight, so cheerful and friendly. It never fails; he always blesses us with his perceptive scripture analysis in his Sunday offerings. He is a disciple of whom we are very proud.

Yes, there are some people I have forgotten and some details I have omitted, for that I apologize. But again on behalf of myself and the LFA steering committee, thank you all for a most enjoyable and memorable reunion. ~ Jerry

Updating the Family Records

Pam Beach has agreed to gather the vital records of births, deaths and marriages. She will organize this important information for newsletter publication. Begin sending this data to Pam Beach, 570 Ableiter Rd, Wrenshall, MN 55797-9156. Please be prompt with such news so it may be passed on to the family.



Alexandria Bay Reunion 2000 Attendees

Ainsworth, Maryan	Greenwich, Ct	Linnell, Paul	Jackson Hts, NY
Anderson, Carol Jean	Black River Falls, WI	Linnell, Richard (Dru)	Orangeville, IL
Anderson, Barkley	Edgar, WI	Linnell, Pam	Chicago, IL
Anderson, Alice (Larry)	Brooklyn Park, MN	Linnell, Robert (Maureen)	Selah, WA
Beach, Pamela	Wrenshall, MN	Linnell, Thomas (Lori)	Gilbert, AZ
Dittus, Sue	Windsor, CA	MacDonald, Wendy; dau Sarah	Duxbury, MA
Benzing, Laurie (Mark) dau. Rachel (6)	Elliott City, MD	McConnell, Dan	Mason, OH
Borland, Martha, dau. Emily	West Sunbury, PA	McLean Dixie	St. Paul, MN
Burchard, Laraine	Pioneer, CA	Moore, Kristen; guest Sue Hamkamp	Troy, NY
Cummings, Robert & Marion	Houghton, NY	Newman, Joan	Glen Falls, NY
Elliott, Ladoska	Harrisburg, OR	dau. Joanne Truchon & gr daus. Linnell (8) , Abigail (6)	
Wilson, Donna Jean	Harrisburg, OR	Metcalfe, Kathy; dau. Cara & gr son Mitchell (11 mos)	Canton, MY
Ferguson, Herb (Aggie)	Lakeville, MN	Rainey, Kathryn; son Alex (2)	Dallas, TX
Featherstone, Bonnie	St. Paul, MN	Palmquist, Mavis (Earl)	St. Paul, MN
Fritz, Carole (Ralph)	Glenwood, MN	Ponting, Pamela (Ken), son Alex (11), dau Kimi (8)	Petaluma, CA
Gutzman, Gerald (Elaine)	Solana Beach, CA	Roberts, Glen (Marcia)	N. Mankato, MN
Jutovsky, Joel, son David (12)	Novato	Rawls, Daphne (Mike), son Nick (13), dau Brittany (10)	Des Plaines, IL
Farnsworth, Mary Ann	Novato	Ryan, Jean S.	Duluth, MN
Keller, Suzanne	Lake Mary, FL	Ryan-Haney, Patricia	Duluth, MN
Klinkerfues, Doris	Woodbury, MN	Ryan-Hansen, Shelly	Columbus, OH
Kinney, Cheryl	Woodbury, MN	Soderlund, Marvel	Oakdale, MN
Linnell, Al (Ann)	Seattle, WA	Spelde, Judy	Post Falls, ID
Linnell, Clinton	Fallon, NV	Swedberg, Kay (Jim)	Kailua, HI
Linnell, John H.	Bethany, OK	Tremewan, Althea (Don)	Minneapolis, MN
Linnell, Gerald W. (Jeannine)	Angels Camp, CA	Ulrichs, Barbara	Syracuse, NY
Linnell, J. Scott (Susan) daus. Allison (10), Erica (8)	Colts Neck, NJ	Weaver, Heather	Las Cruces, NM
Linnell, J. Andrew, sons David (21), Nathan (18) dau Moriah (16), guest Natasha Dashkovskaya	Peterboro, NJ	Wisner, Joanna (Bob)	Manawa, WI
Linnell, Heather guest Scott Gammon	New York, NY	Whitney, Claude (CC)	Newport Beach, CA
Linnell, Jerry (Pat)	Washington, DC	Whitney, Robert (Phyllis)	Minneapolis, MN
		Wynn, Mark (Barbara)	Ellicott City, MD
		Wynn, Rachel (JC)	Catonsville, MD
		Westerwick, Barrie (Eric) son Dan (13), dau. Linnet (11)	Holmdel, NJ



Reunion 2000 Scrapbook

Barrie Westerwick has agreed to create a scrapbook of memorabilia from the reunion in Alexandria Bay for the family archival records. Barrie is looking for all kinds of material from reunion attendees. Everyone that attended the reunion is welcome to contribute pictures, papers, remembrances, post cards, etc. Your contributions may be sent to Barrie Westerwick, 11 Allocco Dr, Holmdel, New Jersey 07733-1451.



From the Editor

Pam Ponting

Hello to all my Linnell cousins and greetings from California! Not only did I leave the reunion in Alexandria Bay with some wonderful memories, I also left with job of LFA Newsletter Editor! I am honored to have been chosen for the job and will do my very best to carry on with what Jim & Kay Swedberg have so lovingly nurtured.

This issue is chock full so with limited space available I will encourage you all to contact me however works best for you with any and all news and suggestions. Already I have some great articles for the next issue— fascinating Civil War era letters from cousin Sally Tongren, Swedish Linnell connections, more reunion news, getting to know our new Steering Committee members, plus much more!

(Aloha—Continued from page 1)

when we recovered our senses we realized that the bowl really belongs with the Chairman and so we returned it to him. His gracious expression of aloha was more than enough reward. We left the reunion early Sunday because we had very limited time and some non-Linnell family to visit. That meant we did not have a chance to say a proper good-bye to all of our cousins. So this letter will have to serve for now. We had a wonderful time and we plan to attend the next reunion. Perhaps we will have more time to spend then.

So Mahalo (thank you) for giving us the wonderful experience of editing the newsletter, and Aloha to you all.

Linnell Family Website "Under Construction"

Andrew Linnell,
Web Master



Planning and work involved to move our website to a new host is underway. The web committee now has two

dynamic individuals working on the project, Heather Linnell and Andrew Linnell. They are looking for your input to make our this web site interesting and fun to check into regularly.

Our website has had the following content—Home Page with Introduction to Robert Linnell, Descendents of Robert Linnell book order form, LFA membership information with member application, Upcoming Events, pointers to other Linnell web sites, and the Newsletter. Now we wish to expand it ; here are some ideas Heather and Andrew have for the new, improved web site.

- ◆ Photo album page that points to family albums on the web as well as information on photo album services and free storage on the web where you can put your pictures.
- ◆ Announcements of family events expanded to allow other family branches to post information on their events. The idea is to inspire other family branches to participate on our web site.
- ◆ "Bio" pages where people can post stories, current news and historical news about themselves, their children or ancestors.
- ◆ "Biz" page that lists LFA member businesses and how to contact them.

Andrew and Heather look forward to hearing your ideas. This is your family website, your participation is important.

Heather Linnell, 59ml@m59ml.com
Andrew Linnell, Andrew.Linnell@compaq.com

REUNION 2000 PROCEEDINGS



Linnell Family Association Scholarship Fund

On June 24, 2000, a special meeting of the Steering Committee was called by Chairman, Jerry Linnell. Jerry presented a written motion that the Steering Committee recommend to the mem-

bership that an Association Scholarship Fund be established. Jerry's motion was seconded by Dick Linnell and the Steering Committee voted that the written motion be approved and that the proceeds of the quilt auction be designated for the scholarship fund. At the banquet on Saturday evening, Maryan Ainsworth read the proposal for the formation of the Linnell Family Association Scholarship Fund as well as a committee to administer the fund. The Association Membership voted to approve the proposal.

Meeting of Steering Committee 2000—2003

On Sunday, June 25, 2000, Chairman Jerry Linnell, presided over a meeting attended by outgoing as well as newly elected Steering Committee members.

Reunion attendance was discussed. Some of the New England cousins reported conflicts with graduations held this time of year.

A motion was made, seconded and passed that future LFA reunions be held on the last full weekend in June of each reunion year.

Deadlines for the August 2000 newsletter were discussed. A motion was made, seconded and passed that approximately \$100.00 be expended for newsletter publication software.

Judy Spelde reported that from her figures, there were 110 people in attendance at this reunion.

Jerry Linnell announced that the next meeting of the Steering Committee will be held at Black River Falls, Wisconsin, May 18—19, 2002 (weekend before Memorial Day).

Robert Linnell, LFA Vice Chairman, acting as Secretary for the Association recorded minutes of the Business Meeting of the Association held Saturday, June 24, 2000. The meeting was called to order by LFA Chairman, Jerry Linnell. A condensed version of committee reports and Association actions are reported here.

- ◆ Motion made (Robert Linnell) and passed unanimously authorizing Treasurer to expend up to \$2,000. For replacement of the Jonathan Linnell gravestone in Orleans, Massachusetts.
- ◆ Judy Spelde, Treasurer, presented her report in the form of a balance sheet for period Jan 1, 1997—June 15, 2000. Motion made, motion passed to accept report.
- ◆ Rachel L. Wynn, Historian, reported on sales of the 2nd Edition of *The Descendants of Robert Linnell*. All but about 260 volumes have been sold and when sold the profit to the Association will be approximately \$5000.
- ◆ Glen Roberts, Data Computerization, reported that challenges arise when your family tree contains over 8,000 names. His research for the most appropriate software continues. Much of the DRL information is currently on the computer.
- ◆ Dick Linnell, Membership, reported that of the 700 names on the Newsletter mailing list, 250 are dues paying members. Ideas on how to get people to pay their dues were discussed. Removal of non-paying members from mailing list was discouraged at this time. Suggestions made to distribute newsletter via email; survey recipients on whether they wish to continue receiving newsletter.
- ◆ The fine efforts of Maryan Ainsworth, Reunion 2000 Chairperson, were rewarded with a round of applause.
- ◆ Dossie Elliot reported that the 3rd Annual West Coast Linnell Reunion would take place August 5, 2000, in Salem Oregon.
- ◆ Motion made (Dick Linnell) and passed that the next LFA reunion would take place in 2003 and be held at Black River Falls, Wisconsin.
- ◆ Jerry Linnell commented on the financial stability and growth of the Association. All Linnell suggested a dues statement that reports current Association projects and past Association accomplishments.
- ◆ Althea Tremewan, Nominating Committee Chair, presented the following members to serve as officers for the next three years. **Jerry Linnell, Chair; Gerald Linnell, Vice Chair; Robert Linnell, Secretary; Scott Linnell, Treasurer; Rachel L. Wynn, Historian; Glen Roberts, Data Computerization; Pamela Ponting, Newsletter Editor; Dick Linnell, Membership Chair; Dick Linnell, Reunion 2003 Chair.** A motion was made, seconded and passed unanimously to elect the slate as presented.

(Reunion Happenings—Continued from page 2)

Dick Linnell told us of the life of Samuel Linnell. Around 1801, Samuel moved to Grindstone Island. At the outbreak of the War of 1812, Samuel joined the militia and took part in the Battle of Sackett's Harbor. He was captured by Indians, turned over to the British and imprisoned at Halifax, Nova Scotia. Surviving the ordeal, Samuel was eventually discharged at Boston after which he walked home to Grindstone Island.

Following **Sunday morning's** breakfast, a well attended **Prayer & Praise Service** was conducted by the Rev. J.C. Wynn with the assistance of Emily Borland. During the service, Rachel read the 1997—2000 LFA Necrology.



ADDITIONS TO THE FAMILY RECORDS

Linnell Family Association Necrology June 1997 - June 2000

Harlan Attleson	118,241,145,131S	D. 31 Oct. 1998
Verna Johnson Boatman	11a,b15,515,51S	D. 05 Apr 2000
Lydia Tinney Linnell Hals	118,241,231,111	D. 07 Mar 1998
Beatrice Linnell Jones	118,241,231,431	D. 28 July 1999
Archie C. Linnell	118,241,231,36	D. 04 June 2000
Beverly Linnell	118,241,112,648	D. 27 Oct 1998
Clark Linnell	118,241,145,95	D. 24 July 1999
Daryl William Linnell	11a,b15,515,62	D. 03 Apr 1998
Grace Logan Linnell	11a,b15,514,-12S	D. 31 May 1998
Howard Allen Linnell	118,241,116,9-10-1	D. 11 Nov 1999
(Lanchie) John Linnell	11a,b12,62-10,51	D. 12 Jan 1997
Russell F. Linnell	118,241,185,7	D. 01 Apr 1998
Shirley Violet Linnell	118,241,112,641	D. 24 Sep 1998
Vonda Kerr Linnell	118,241,145,15S	D. 14 May 2000
Lawrence (Bud) Nelson	11a,b15,515,92S	D. 18 Oct 1997
John McDonald Provan	117,622,434,5S	D. 16 Oct 1997
Edgar Lewis Roberts	118,241,116,231,6	D. 17 Nov 1997
Lyman J. Roberts	118,241,116,231	D. 04 June 1997
Dean Roeder	11a,b15,514,414	D. 07 Aug 1997
Fay Mildred Stephenson	118,241,231,131	D. 12 Dec 1997
Eleanor Linnell Swanton	118,241,154,33	D. April 1999
Milton Swanton	118,241,154,33S	D. 1996
John Covey Tinthoff	118,241,185,142	D. 28 Apr 1999
Betty Henebry Tinthoff	118,241,185,142S	D. 28 Apr 1999
Edna Linnell Tromble	11a,b15,514,-10	D. 02 Feb 1998
Raymond Fred Walz	11a,b15,514,23S	D. 15 Apr 1999
Thelma Linnell Holte Whitney	118,241,112,811	D. 25 Dec 1997

THE LINNELL FAMILY ASSOCIATION

The purposes of the Association are to promote fellowship among Linnell family members through reunions and the publication of the **Linnell Family Newsletter**, and to preserve the records of the family.

STEERING COMMITTEE 2000 - 2003

CHAIRMAN

Jerry Linnell 202-224-2912 (W)
416 Constitution Ave. NE 202-546-2931 (H)
Washington, DC 20002 JerL@aol.com

VICE CHAIRMAN

Gerald Linnell 209-785-2468
7525 Riata Way
Angels Camp, Ca 95222

SECRETARY

Robert S. Linnell 509-697-6047
2930 N. Wenas Rd
Selah, WA 98942

TREASURER

J. Scott Linnell
23 Liberty Knoll Drive
Colts Neck, NJ 07722 jlinnell@lucent.com

HISTORIAN

Rachel Linnell Wynn 410-242-5760
717 Maiden Choice Lane #523
Catonsville, MD 21228 rlwynn@erols.com

DATA COMPUTERIZATION

Glen Roberts 507-388-9871
2051 Winchester Way
No. Mankato, MN 56003 snowbirds62@juno.com

NEWSLETTER EDITOR

Pamela Ponting 707-778-1352
413 Melvin Street
Petaluma, CA 94903 irises@home.com

MEMBERSHIP CHAIRMAN

REUNION 2003

Dick Linnell 815-789-4668 (H)
PO Box 95 819-789-4261 (Fax)
Orangeville, IL 61060 dicklinnell@hotmail.com

OTHER LFA CONTACTS

♦ VITAL RECORDS Pam Beach psdb@aol.com
570 Ableiter Road
Wrenshall, MN 55797-9156

♦ WEB SITE

Andrew Linnell, andrew.linnell@compaq.com
Heather Linnell, 59ml@59ml.com

ORDER FORM

The Descendants of Robert Linnell

Second Edition - \$35

Additions And Corrections

1994 - 1997 - \$8

Prices include postage and handling

Please send me:

___ The Descendants of Robert Linnell \$ ___

___ Additions and Corrections \$ ___

Total Amount Enclosed \$ ___

Make checks payable to: **Linnell Family Association**

Name _____

Street _____

City _____

State _____ Zip _____

Send order form and payment to:

Rachel L. Wynn

717 Maiden Choice Lane #523

Catonsville, MD 21228

MEMBERSHIP REGISTRATION & RENEWAL

Linnell Family Association

Please register me as a ___new (or) ___renewing member of the Linnell Family Association in the following category:

_____ Single Life Time (\$125.00)

_____ Single Annual (\$15.00 a year)

_____ Family Annual (\$25.00 a year)

Make checks payable to: **Linnell Family Association**

Name _____

Street _____

City _____

State _____ Zip _____

Send form and payment to: Scott Linnell, Treasurer

23 Liberty Knoll Drive

Colts Neck, NJ 07722

LINNELL FAMILY ASSOCIATION NEWSLETTER

Dick Linnell

P. O. Box 95

Orangeville, IL 61060



ADDRESS SERVICE REQUESTED

